

*Water Jewels*™

FLYING PALACE COLLECTION 2018

IWG·LILOU  
WATER JEWELS

Narrow and wide body aircraft



# Pure Italian craftsmanship

MADE IN ITALY

**IWG·LILOU**  
WATER JEWELS

**AIRCRAFT, YACHTS & PALACES**

*Lilou's operas d'art are created by commission only.*

Lilou's creations are recognized for their exclusivity and uncompromising excellence.

We take pride in ensuring that each of our "Water Jewels" captivates, offering timeless pleasure to those who delight in art, luxury and superlative Italian craftsmanship.



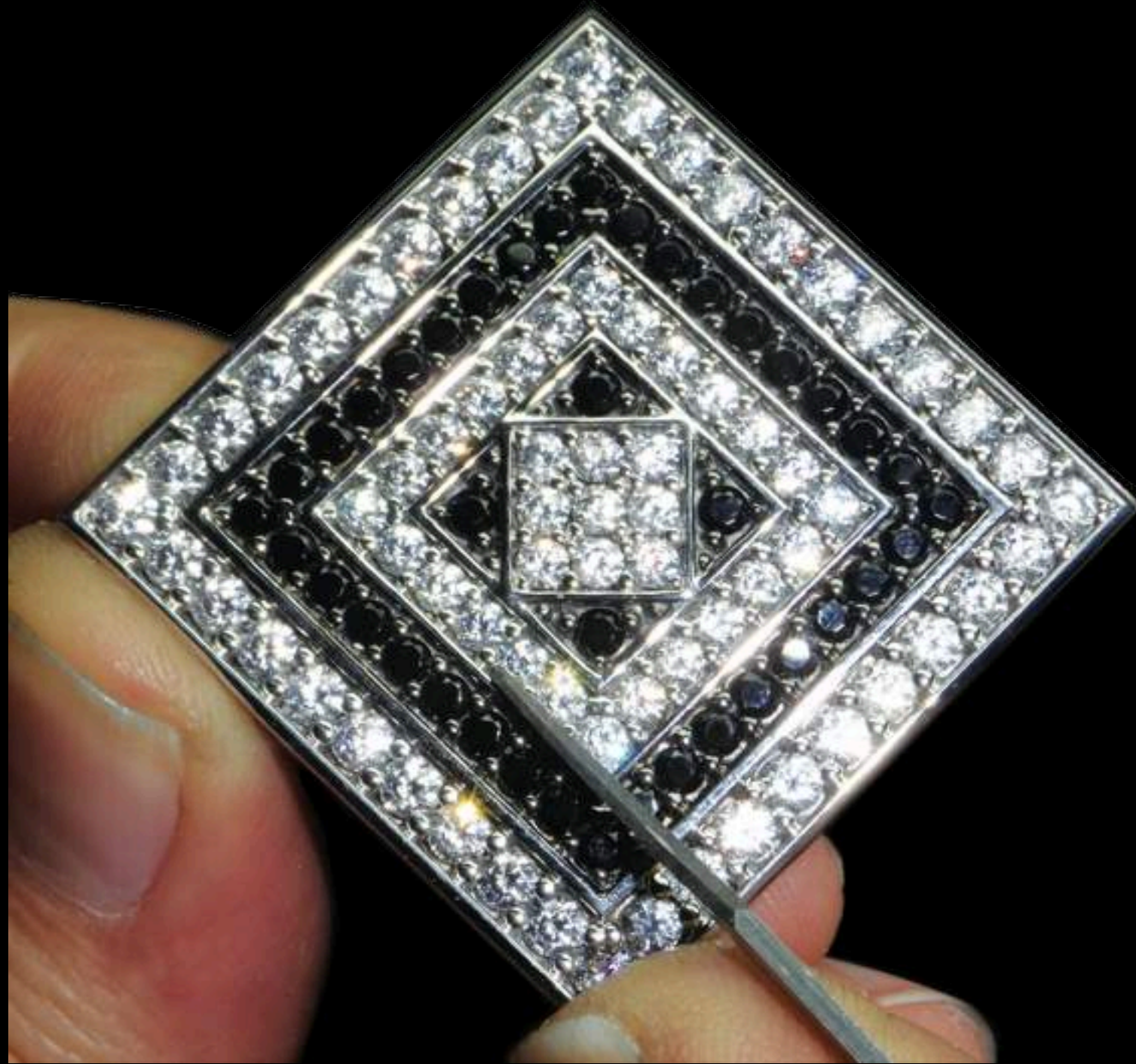
**CRAFTSMANSHIP**  
Lifetime Guarantee

**IWG-Lilou's high level of craftsmanship expertise and quality materials enable us to offer a product of Italian excellence.**

Our Goldsmiths and Master setters are highly experienced craftsmen in Valenza, Italy, the manufacturing epicentre of the finest jewellery houses in Europe which include Bulgari, Damiani, Cartier among others.

IWG-Lilou's creations are crafted with scrupulous attention to detail with each stone hand set to the most exacting standards. Our setting work is done under bench microscopes for the best in quality control throughout the gem setting process.

IWG-Lilou's quality control is high jewellery manufacturing standard. The meticulous and precise steps performed in the creation of our pieces allows us to guarantee our craftsmanship for a lifetime.

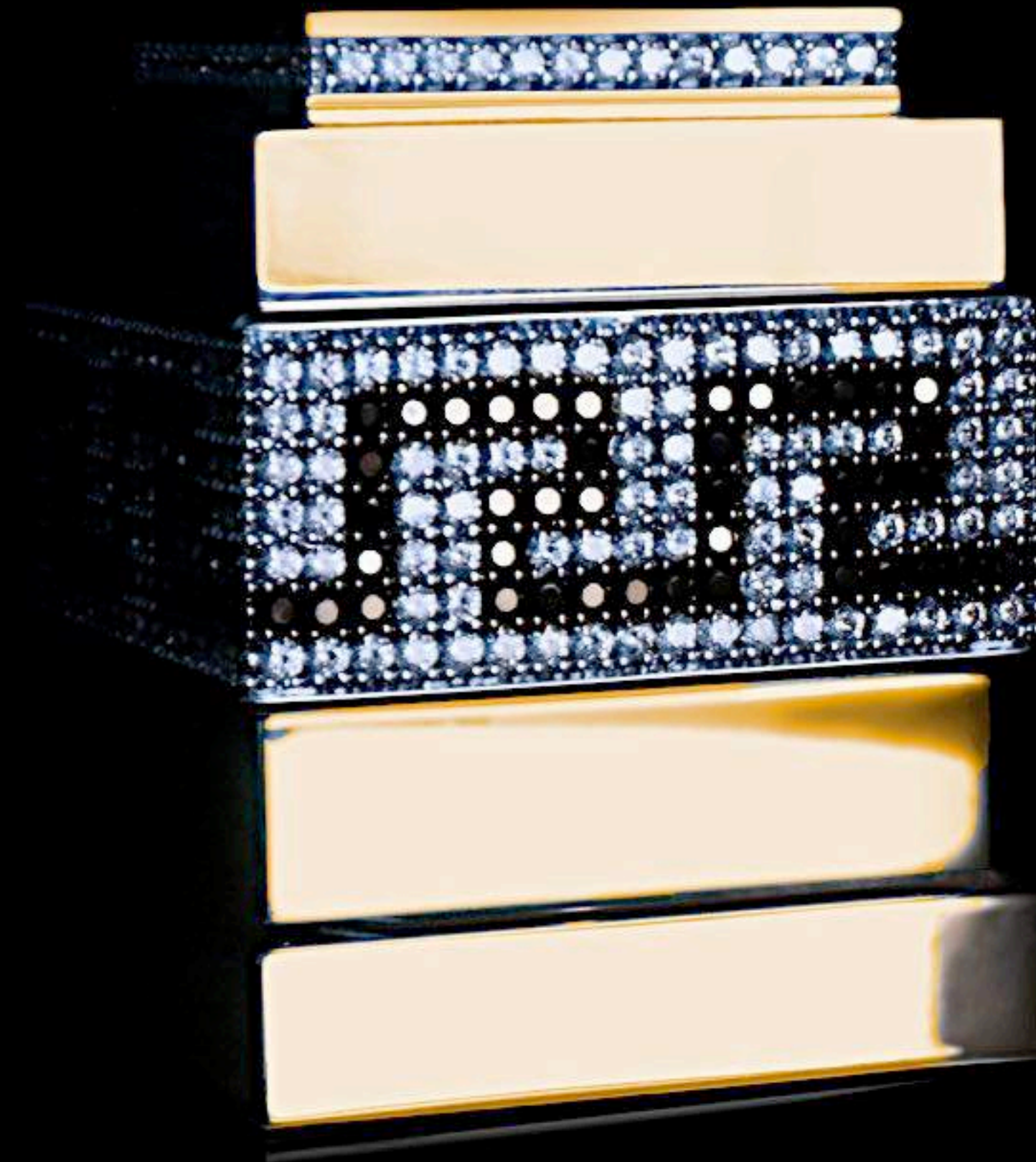


When patience is a necessary  
part of creating a beautiful object



When hours are not calculated or  
allowed to affect the decisions of the artist...

What becomes apparent is an expression  
of beauty, refinement and excellence.



## GRECA

Meandros - Μαίανδρος

Ancient Grecian key symbolizing infinity or the eternal flow of things. Highlighted with over 2,600 hand set shimmering Swarovski gemstones.





## GRECA



Top - Black and white Swarovski gemstones encircle the decorative overflow; the drain is adorned with Black onyx surrounded with brilliant black and white gemstones. Right - Top view of the spout and handle show off the exquisite craftsmanship and attention to detail. GRFS-101 Lead time 16 Weeks.

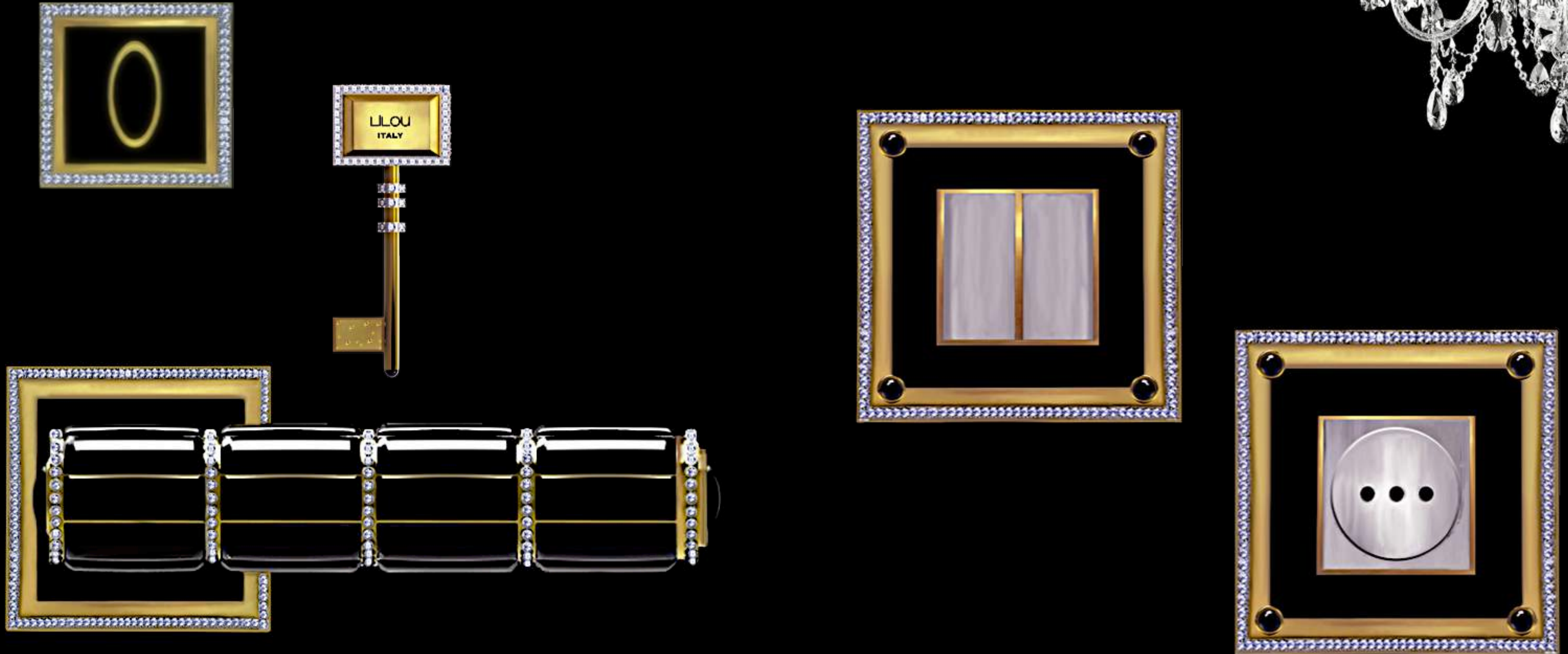


BAGNOIRE ESSENTIALS



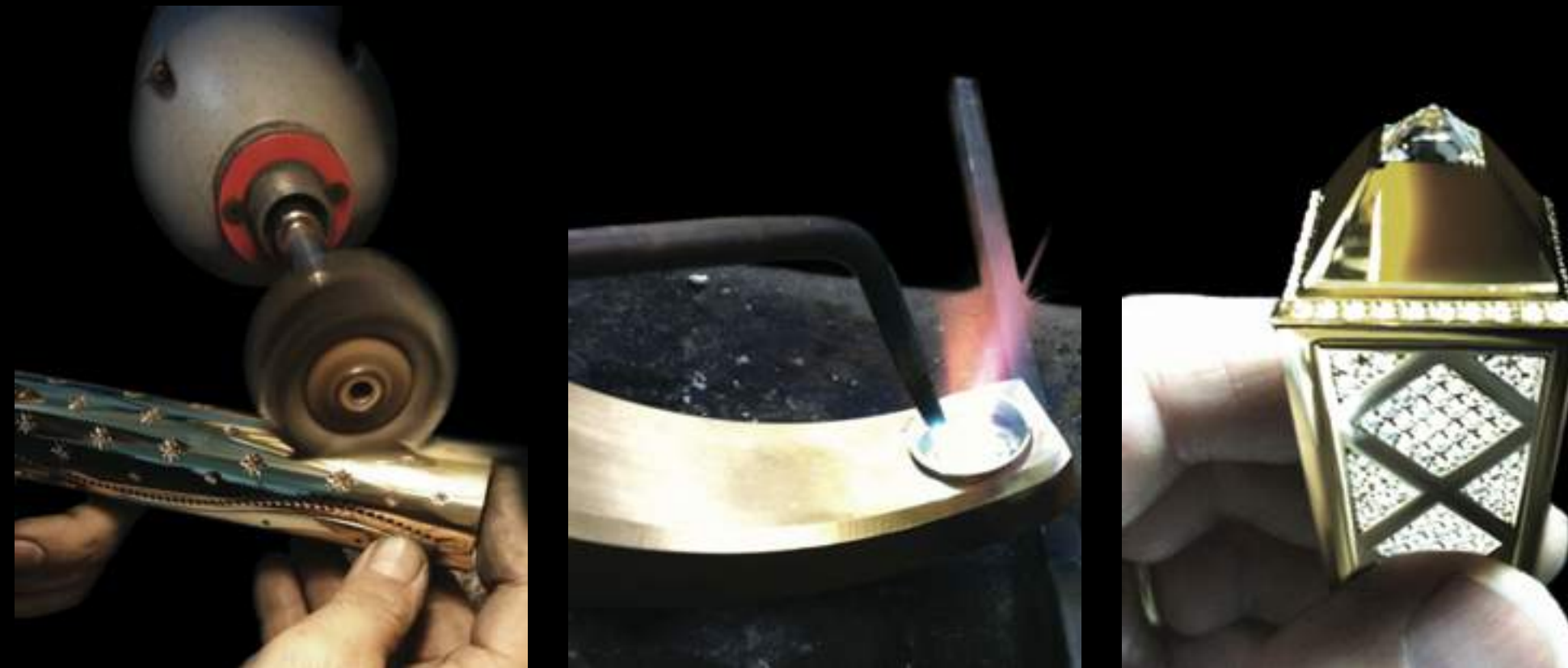
All elements are attached to plaques with the bejeweled Grecian motif designed in a carpet of pave settings.  
Ornamented bath hook hand-set with natural black onyx and Swarovski gemstones. GRBH-014  
Soap dish holder with cabochon studded rings. GRSD-109 Glass holder with cabochon studded rings. GRGH-110  
Guest towel rail with rectangular set onyx and Swarovski gemstones. GRGTR-113

## ENSUITE ESSENTIALS



Stylized door handle, lock and key set embellished with rectangular shaped natural black onyx and brilliant Swarovski gemstones GRDS-117.  
Elegant light switch and electrical socket adorned with mother of pearl, brilliant handset gemstones and natural black onyx cabochons. GRLS-111, GRES-112 respectively.

# CRAFTSMANSHIP



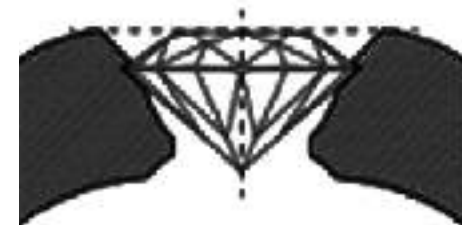
IWG-Lilou's objets d'art are based on research, design and experimentation by highly skilled artists and craftsmen whom are experts in their crafts and instinctively follow their passions.



Our Master Gem-setters are highly qualified in their craft enabling them to utilise various proven setting styles to create the most secure setting for each and every gemstone.



## Gypsy Setting



*The Gypsy setting, also known as a flush setting, is one of the most secure styles of settings, making it the perfect choice for jewellery pieces exposed to harsh environments with frequent knocks.*

A traditional style of setting, the Gypsy setting is where the crown of the gem is the only part exposed and the table of the gemstone is almost level with the surrounding metal.

The Gypsy setting normally starts with the goldsmith drilling a hole in the metal object and placing the gemstone into it. Once the gem is in place the metal around the girdle is pushed slightly over the gemstone securing it in place.

*A lot of modern designers, especially those who specialize in Diamonds are turning the clock back and starting once again to use the Gypsy setting.*

## Bezel Setting



*One of the earliest methods of setting gemstones into jewelry, the Bezel setting makes the gem appear bigger than it actually is.*

This antique setting features a thin band of metal completely surrounding the gem along its circumference.

The difference between a bezel setting and gypsy setting is that the metal on a bezel setting will almost seem to come up over the gemstone, whereas in a gypsy setting the gemstone is sunk into the metal, so the gemstone sits below the surface of the metal.

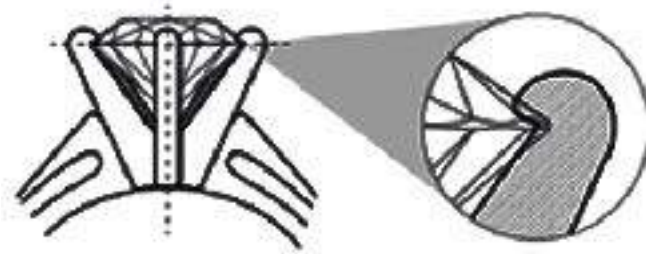
*The Bezel setting offers superior protection from chipping,*



Our Craftsmanship includes the setting and securing of the stones which carries a lifetime guarantee ensuring our clientele peace of mind when acquiring one of our creations.



## Prong Setting

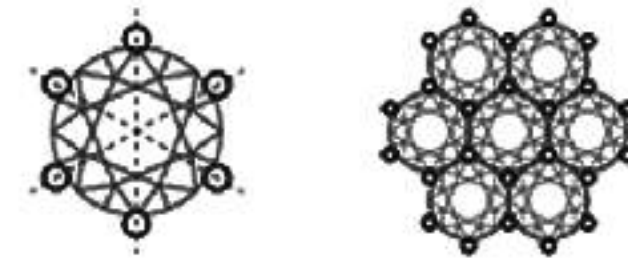


*The Prong setting can be used for all kinds of faceted stones. It ensures that the stone gets set at just the right height, completely straight, centered and secure.*

Prong Setting is the most common and popular type of setting, where the gemstone or diamond is placed within a slim metal cradle, which is meant to house the gemstone's culet (its lower half), and is held in place with small and slim metal prongs, or claws, which grip the gemstone's girdle (its sides).

*Most prong settings feature either four or six prongs; with the former you can see more of the diamond, but the latter is more secure.*

## Pavé Setting



*Derived from the French word "Pave" meaning to be paved, small diamonds are set together with minimal visibility of the tiny metal beads or prongs holding the stones in place. The effect is one of continuous sparkle.*

The jeweler typically drills holes into the ring, carefully places the diamonds into the holes, and finally forms tiny beads, or mini-prongs, around each diamond to secure them into the holes.

This setting is also known as a bead setting and in the case of especially small stones, may be called a micro-pavé setting.

*Pave setting is nothing but a modified version of prong setting.*

## HARLEQUIN

*“Joie de vivre”*



The Harlequin, a 16th century character from the Italian Commedia dell'arte, plays a mischievous character forever in pursuit of romantic love. Drawing upon his checkered costume as inspiration, the Harlequin's *joie de vivre* shimmers with timeless elegance.







## HARLEQUIN



Left - Decorative handle with brilliant Swarovski gemstones handset into pavè checkered pattern 24Kt. Gold plate;  
Top - Embellished overflow; Below - Checkered theme drain.  
HQFS-901  
Lead time 18 weeks



## HARLEQUIN

Master Suite Accessories



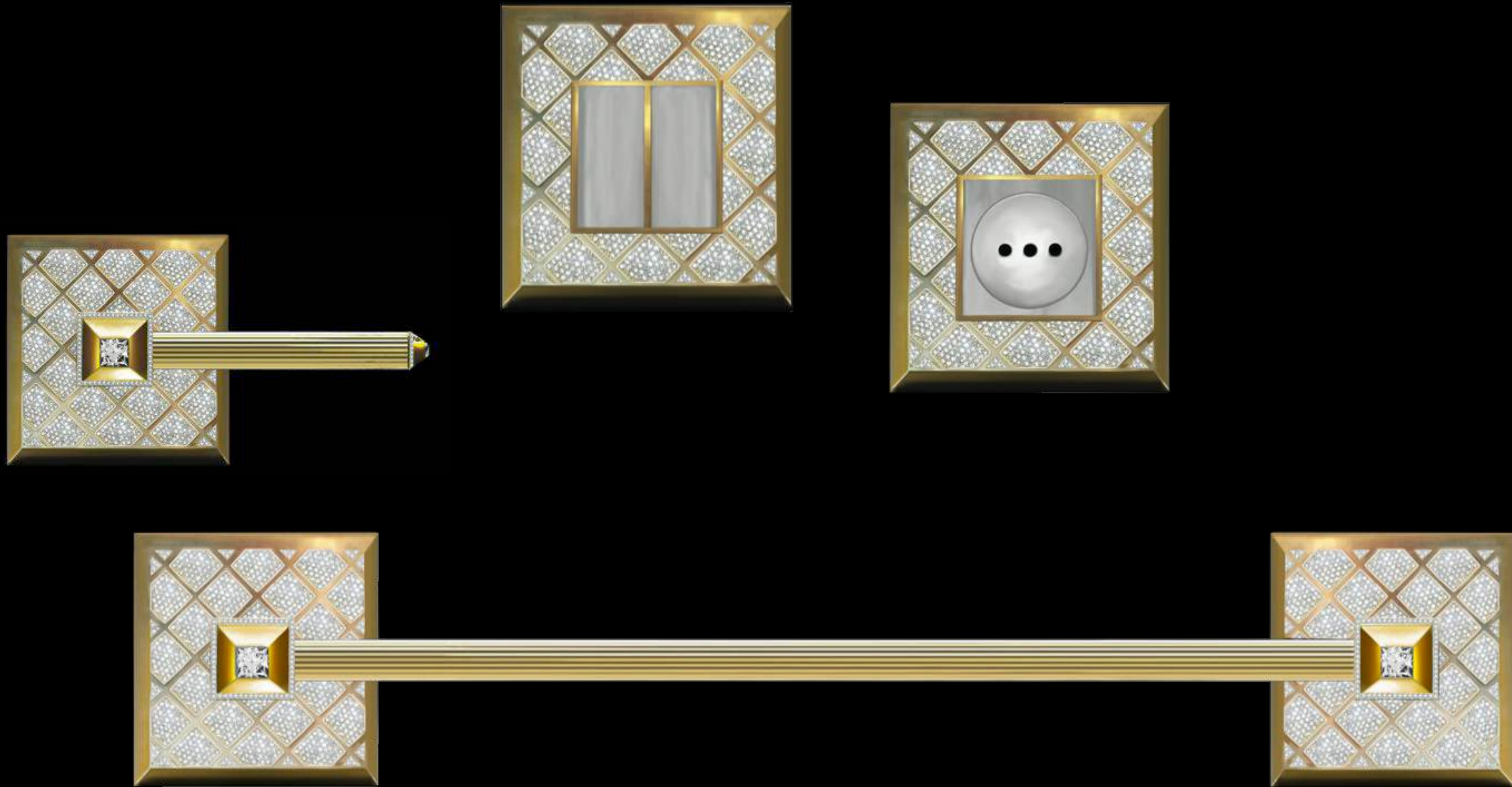
Decorative door set includes door handle and Key hole plaque HQDS-917  
The door set is crafted with brilliant Swarovski gemstones handset into  
checkered Harlequin pattern IN 24Kt. Gold plate.

HARLEQUIN  
Master Suite



Top - Decorative Soap dish HQSD-909 / Tumbler HQGH-910)  
Crafted with brilliant Swarovski gemstones handset into checkered  
pattern in 24Kt. Gold plate ;  
Bottom - Guest towel rail (55CM) HQGTR-913.

HARLEQUIN  
Master Suite



Top center - Checkered theme Light switch HQLS-911  
Electrical outlet HQES-912.  
Far left - Paper roll holder HQPRH-915,  
Bottom- Master Bath towel rail 60cm HQMBTR-913.

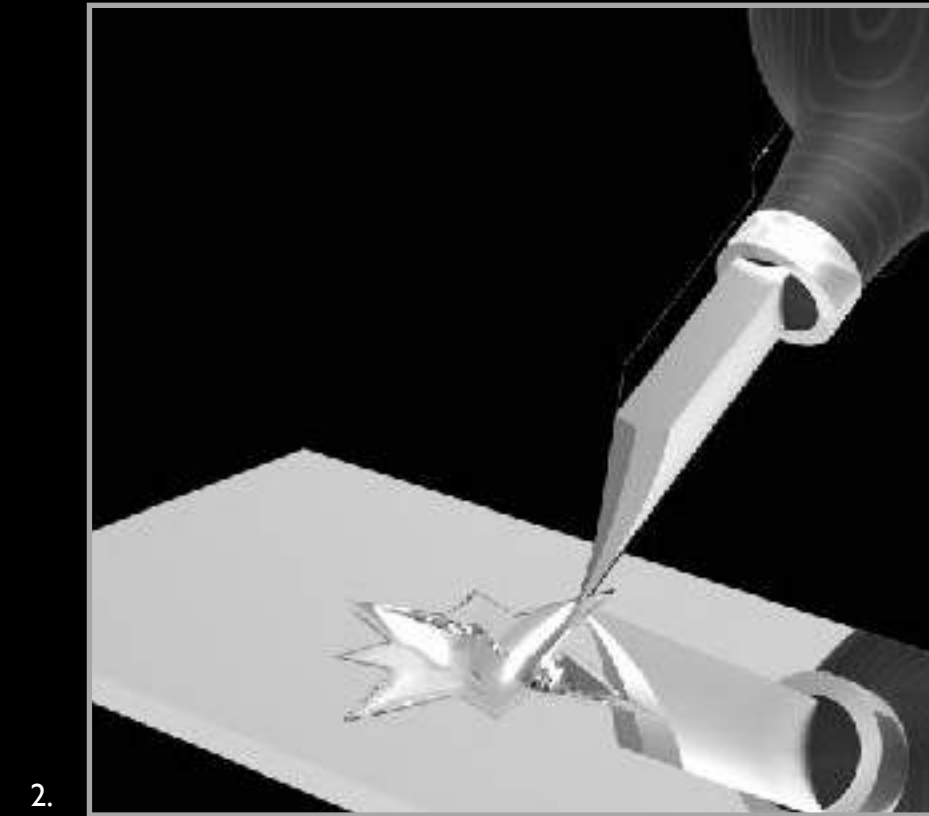
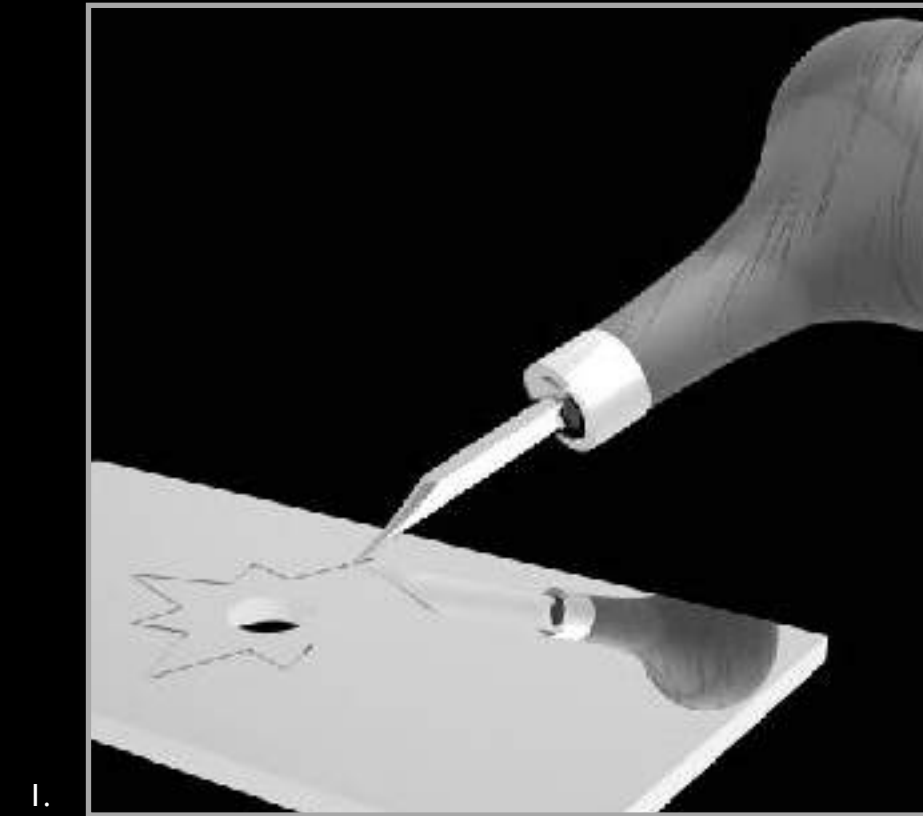
**AURORA**  
“Transformation Goddess”



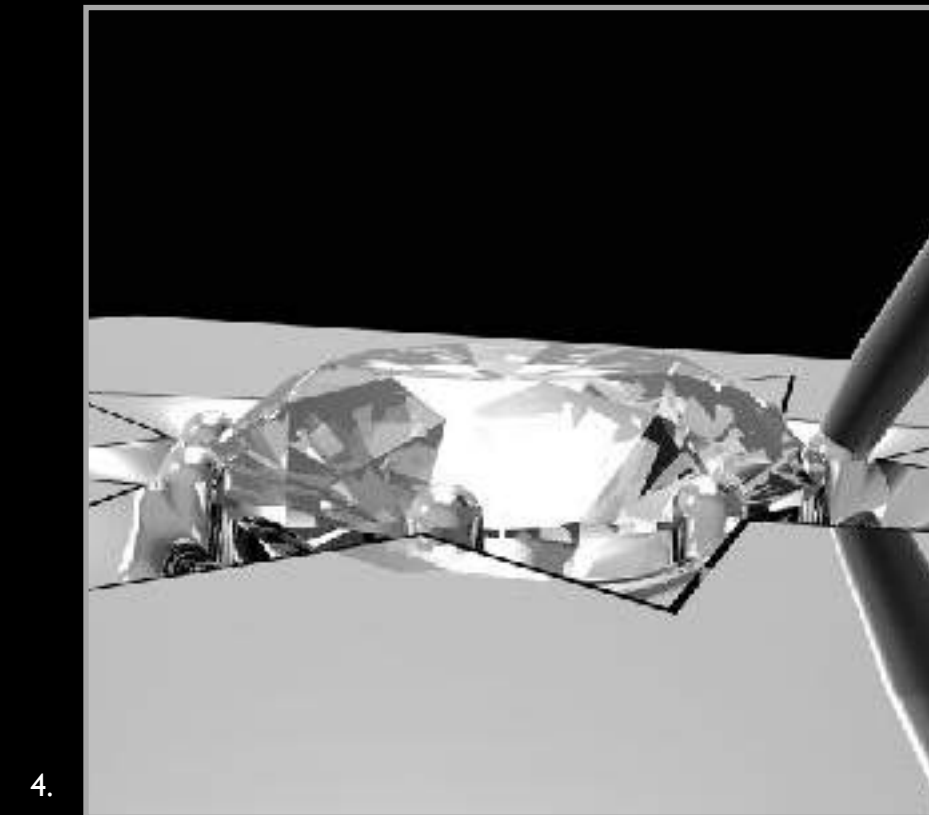
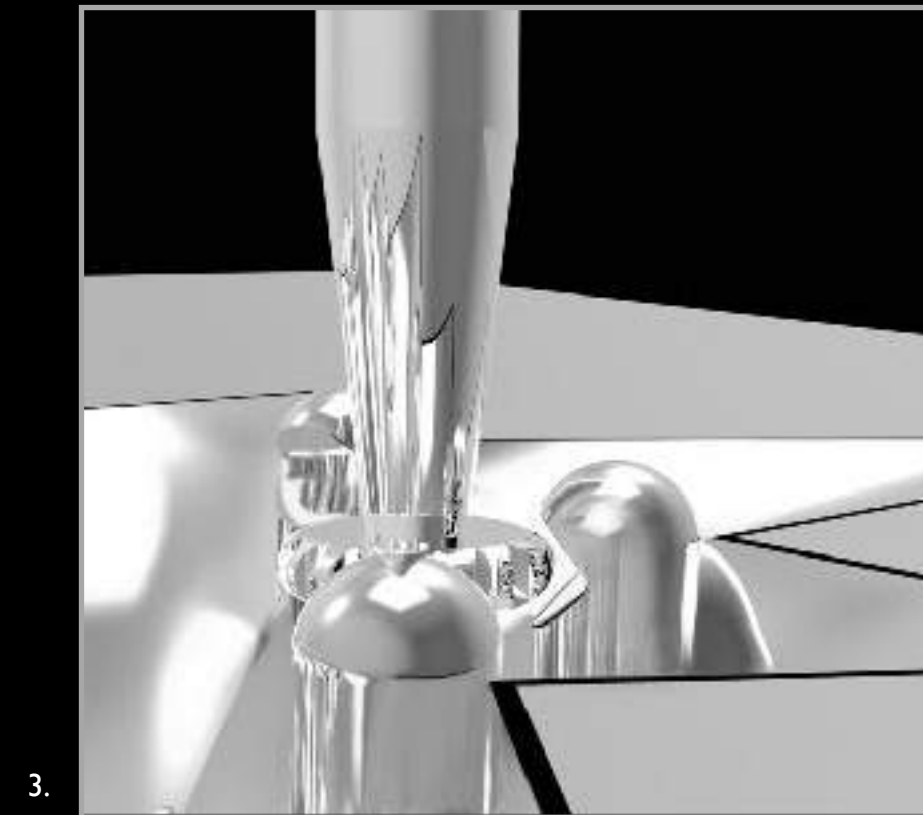
Lilou's portrayal of this mythical character highlights the transformation of night to day with over 800 dazzling gemstones depicting the sun, moon and stars.

## Master Craftsmanship

*The following steps provide an insight into the craftsmanship that goes into each star adorning the Aurora "Water Jewel".*



1. Cutting - The craftsman hand carves into the metal forming the shape of the star using a bench carver.
2. Sculpting - Once the shape of the star is cut, the craftsman will hollow out the star using a variety of knives and files to create little mountains of metal that, once formed and rounded, will become the prongs. Each individual gemstone will have 8 prongs that will keep it securely in place.
3. The refining of the prongs. Using a jewellers bench drill, the craftsman cuts an indentation into the ball of each prong where the crown of the gemstone will rest. Each cut must be exact in order for the gemstone to sit evenly.
4. The setting of the gemstone. The Gemsetter sets the gemstone into it's prepared seat. Using a utensil with a concave point, the gem setter is able to grip each ball point securely and bend the prongs over the crown of the stone securing the gemstone for a lifetime.





## AURORA



Left - Handle with handset gemstones depicting the sun and the moon;  
Top - Star shaped overflow with shimmering gemstones; Below - Drain  
with hand-carved stars set with black and white brilliant gemstones.  
ARFS-205





**Plutus**  
"Greek God of Treasures"



Plutus  
Greek: Πλούτος,



Large hand-cut purple Amethysts are the centrepieces of this eclectic corona encompassed with a variety of stones and settings. PLFS-2101



Left- Amethyst corona handle/mixer; Top - Stylized overflow; Bottom - Decorative drain.

# DESIGN & PERSONALIZATION



## DESIGN

Personalization comes from creative inspiration. Lilou's designers work hand-in-hand with clients evaluating the ambiance where the "cabin jewels" will be showcased. Taking into consideration the various colors, textures and motifs etc... Lilou offers a choice of design through the use of CAD imaging allowing the client to partake in the final decisions of the design and materials.

## MATERIALS

From Swarovski gemstones and gold plate to solid 18Kt. gold and genuine natural gemstones Lilou's personalized works of art are as unique as the materials in which they are crafted.

All creations of noble materials are presented with official Certificates of origin.  
Diamonds and precious gemstones are Antwerp/AGI certified and Precious metals are GLD certified,

Lilou is committed to upholding professionalism & social, ethical, and environmental standards and our materials are from Non-Conflict sources.



# CLEANING

---

By following a few simple care instructions, you will keep your “Water Jewels” in excellent condition for years to come.



Lilou’s ‘Water Jewels’ are professionally crafted by experienced jewellers to the exact standards as high jewelry. Your “Water Jewel” will remain static and not be subject to the harsher conditions that a ring or bracelet has to support, but they will inevitably be exposed to various minerals, skin oils, creams, knocks and other forms of contact.

*You can keep your ‘Water Jewels’ in excellent condition yourself using this safe and simple process.*

Mix one part white vinegar and three parts water in a plastic spray bottle. With this solution take a soft cloth and dip it in the solution and put the now wet cloth over the fixture and allow it to soak for 15 minutes. Next, wipe it clean with the damp cloth. Do not use a scrubbing device of any kind or you may damage the surface. When the fixture is free of residue, rinse it thoroughly with clean water and buff with a clean, dry chamois cloth until all water is removed and the fixture is gleaming and bright.

## GEMSTONES

Exposure to various substances can cause a build-up that will dull your gemstone’s brilliance and sparkle.

Using the same solution of white vinegar and water, gently scrub the gemstones with a very soft tooth brush. Rinse and dry with a clean soft cloth. This method is useful for a more extensive cleaning.

\*Gold is a precious metal durable to a variety of chemical elements, never use cleaners containing abrasive cleansers, bleach, ammonia, acids, waxes, alcohol, solvents or other products not recommended for Gold.

\*\*There are many types of gemstones, some of which require specific care and cleaning procedures. A Lilou Jeweler will recommend precise care and cleaning procedures some which may specifically exclude the use of ammonia.

# INNER WORKINGS

Saving Water

Saving Energy

Reducing CO2

With products that save both water and energy Lilou entrusts Neoperl's innovative solutions for drinking water. With a worldwide reputation, Neoperl produces components that shape water streams, regulate flow rates and protect water from contamination. As a global leader with 1,700 people in 18 countries worldwide Neoperl provides Lilou with support on a global basis.

S.T.S.R. S.r.l., was founded in 1979 and has one of the most sophisticated research laboratories in Europe today.

S.T.S.R. has developed and introduced innovative new products such as the ceramic disc cartridge used worldwide today and owns several international patents. Based in Milan, S.T.S.R. offers their full support to Lilou during the design and production phases of Lilou's Water jewels.

Aerators

Energy saving

Ceramic disks  
Cartridges  
Valves

Taps

A valuable contribution to climate and environmental protection.

By conserving water and helping to reduce energy consumption, through a careful choice of eco-friendly internal components and sensor-operated faucets, Lilou is doing its part to lighten the Ecological footprint of our beautiful planet.

Lilou's base taps are produced in northern Italy by Giulini G. Rubinetterie. WITH 50 years of producing high quality Italian taps, Giulini G. maintains rigorous attention to all aspects of design, material, environmental and safety measures.

# EXCLUSIVITY



Lilou's bejeweled creations have been evaluated as "Fine Art" by Lloyds of London's experts .



Lilou's creations are entirely handcrafted in Valenza (Po), ITALY, manufacturing epicenter of some of the most notable jewelry houses in Europe.



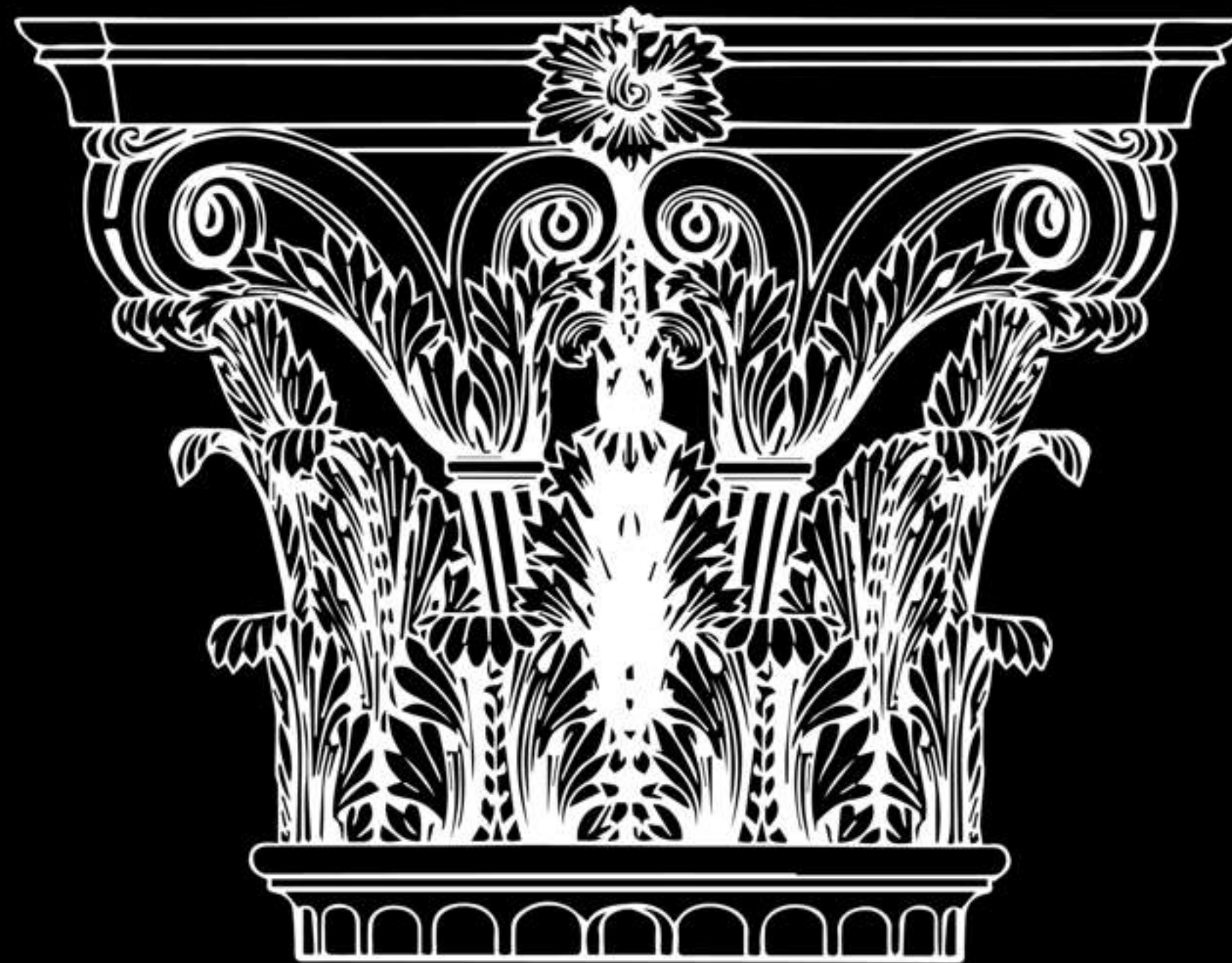
Lilou's creations come with a Lifetime Guarantee for their Craftsmanship including stone settings.



Each of Lilou's creations are presented with an official Design Patent in compliance with the Patent Cooperation Treaty (PCT) in the name of our Client registered with the Italian Patents office Ufficio Brevetti.



Lilou is officially endorsed by SIAM1838, the historic Italian Institution of Art's and crafting, who recently quoted Lilou as "one of the most qualified small businesses today producing extraordinary objects of art in the Italian jewelry sector".



The Art of Lilou

Designed and created in Italy

IWG·LILOU  
WATER JEWELS

[www.lilouwaterjewels.com](http://www.lilouwaterjewels.com)

Sales +1 604 603 7111

[glapierre@water.aero](mailto:glapierre@water.aero)